



Magnum CSCR Manual Pump Control Panel - Single Phase

Introduction

Magnum CSCR Manual Pump Control Panel S.P is a premium controller for pumps or motors having low H.P and for low operational time. It comes without a contactor and hence is economical when compared to regular Panels.

Applications

Magnum Single Phase Submersible Control Panels are powerful controlling devices for your submersible pumps which are used for domestic & agricultural installations. Magnum Panels controls submersible pumps found in many applications such as:

- Drainage
- Sewage Pumping
- General Industrial Pumping
- Slurry Pumping

Functions

- 1.Switches your pump/motor on and off.
- 2.Protects the pump from high voltage and short-circuit .
- 3.Provides extra torque when the pump is being started.
- 4.Maintains torque level while the pump is running.
- 5.Indication of incoming voltage and current drawn by the motor.

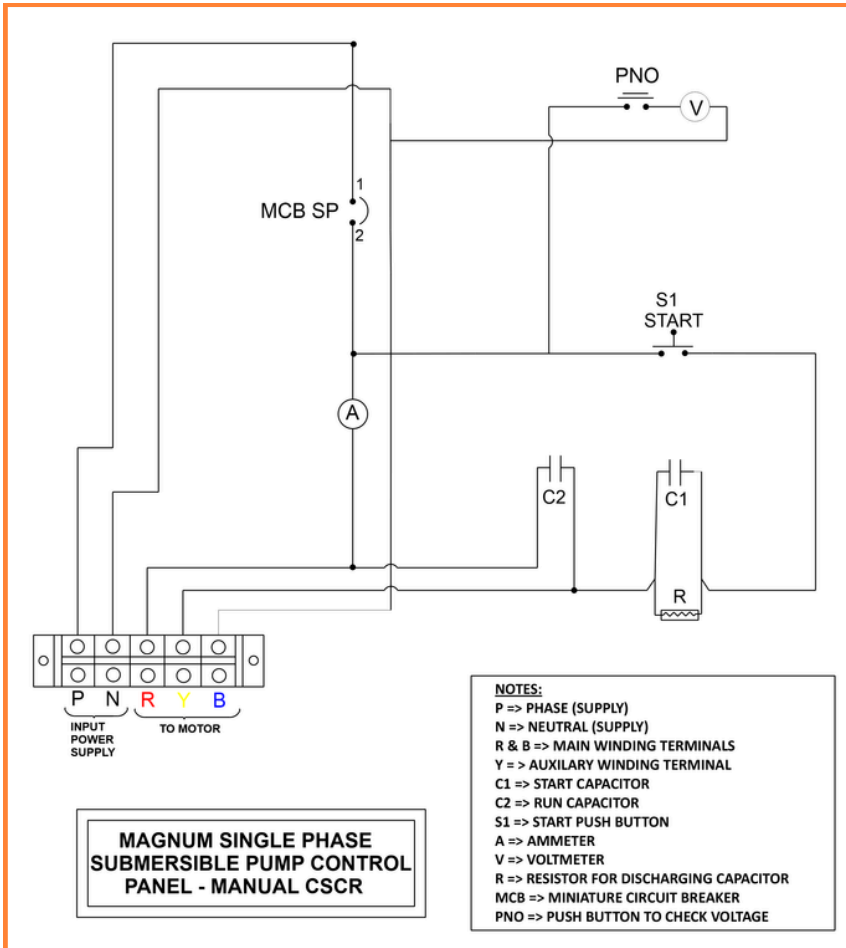
Salient Features

- 1.Powder coated MS enclosure for corrosion resistance & sturdiness.
- 2.Heavy Duty Start & Run Capacitors.
- 3.Fitted with Miniature Circuit Breaker for reliable overload and short circuit protection.
- 4.Easy & quick mounting.
- 5.Ergonomic design with aesthetic looks.
- 6.No screw protrusion from the panel, hence additional safety from water, dust, corrosion and electric shock.
- 7.Porcelain connector for safe and easy termination.
- 8.Gasketed enclosure for protection from ingress of dirt and water

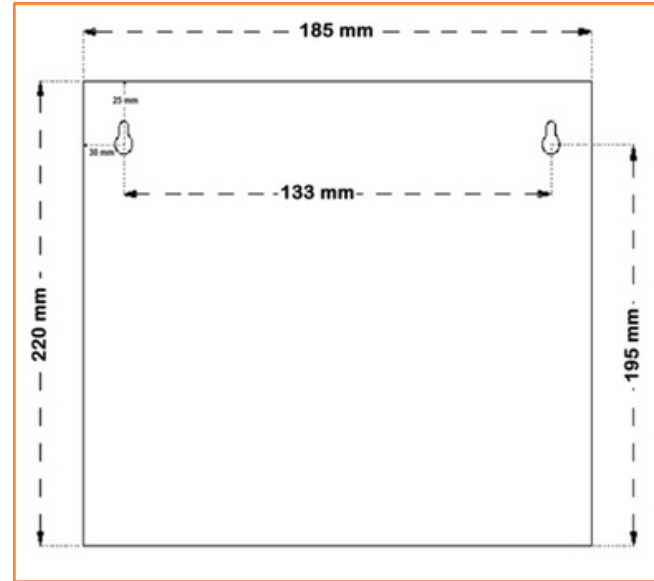
Technical Specifications

- 1.Enclosure: Powder Coated Mild Steel
- 2.Current: AC
- 3.Frequency: 50Hz
- 4.MCB: Up to 20A
- 5.Area: (185*220*135) mm
- 6.Net Weight: 2.12 Kilograms
- 7.Insulation Voltage AC (Vi): 660V
- 8.Ambient Temperature:(-25°C to +55°C)
- 9.Terminal Capacity: 1 * 16 mm² or 2 * 10 mm²
- 10.Power range: Up to 2 HP
- 11.Phase: Single Phase
- 12.Number of cable entries: 2 (bottom)
- 13.Enclosure cover: Fixed
- 14.Country of origin: 

Circuit Diagram



Mounting Template (mm): (Not to Scale)



Selection & Ordering info.

Power in H.P.	0.5	1	1.5	2
MCB(Amps)	6	10	16	20
Cat Number (CSCR)	PSMH	PSM1	PSM1H	PSM2
Standard Pkg.	7/range			

Links

Product page - <https://kalpcontrols.com/product/cscr-pump-panel-manual/>

Video url - https://www.youtube.com/playlist?list=PLOXFfzEEAifkPtV4xzmPKTMUN5kgPRZ_X