



Magnum Compact MaCHK-1 Pump Control Panel -Single Phase

Introduction

Magnum Compact MaCHK-1 Pump Control Panel - S.P. is a powerful controlling device for your submersible pump made with heavy duty components, which protects the pump from hazards caused due to over-current.

Applications

Magnum Single Phase Submersible Control Panels are powerful controlling devices for your submersible pumps which are used for domestic & agricultural installations. Magnum Panels controls submersible pumps found in many applications such as:

- Drainage
- Sewage Pumping
- General Industrial Pumping
- Slurry Pumping


Functions

- 1.Switches your pump/motor on and off.
- 2.Protects the pump from over current.
- 3.Provides extra torque when the pump is being started.
- 4.Maintains torque level while the pump is running.
- 5.Indication of incoming voltage and current drawn by the motor.

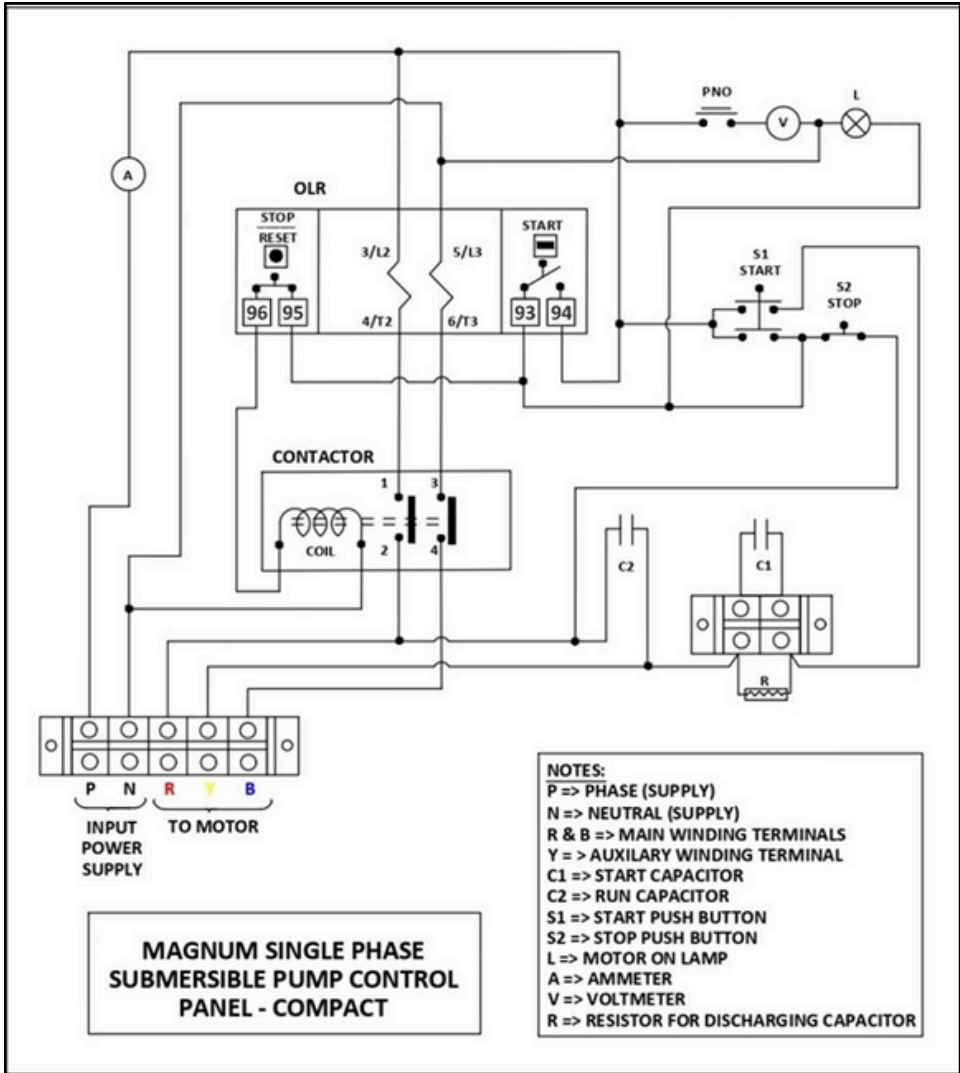
Salient Features

- 1.Powder coated MS enclosure for corrosion resistance & sturdiness.
- 2.Rugged MaCH contactor with wide voltage band (140- 240V).
- 3.Fitted with MaK-1 type relay for reliable overload protection.
- 4.Easy & quick mounting.
- 5.Ergonomic design with aesthetic looks.
- 6.No screw protrusion from the panel, hence additional safety from water, dust, corrosion and electric shock.
- 7.Gasketed enclosure for protection from ingress of dirt and water

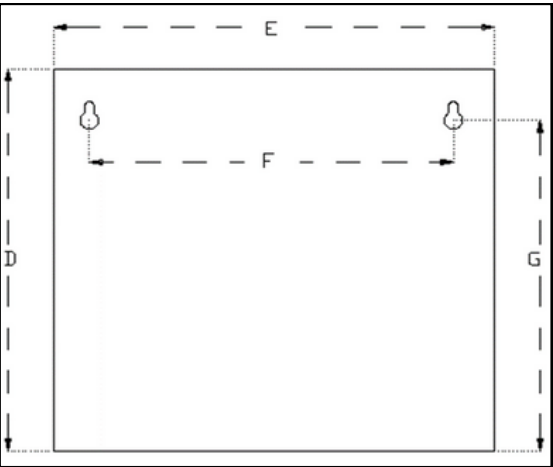
Technical Specifications

- 1.Enclosure: Powder Coated Mild Steel
- 2.Current: AC
- 3.Operating Voltage: 70% to 105% of coil voltage
- 4.Pick up voltage: Minimum 70% of coil voltage
- 5.Drop off voltage: Below 50% of coil voltage
- 6.Contactor: MaCH 2 Pole (10 to 40A)
- 7.Relay: MaK-1 2 Pole
- 8.Area: (231*243*129) mm.
- 9.Net Weight: 3.26 Kilograms
- 10.Insulation Voltage AC (Vi): 660V
- 11.Frequency & Ambient Temperature: 50Hz & (-25°C to +55°C)
- 12.Terminal Capacity: 1 * 16 mm² or 2 * 10 mm²
- 13.Power range: 0.5/1/1.5/2/3 HP
- 14.Coil Voltage: 220 V
- 15.Phase: Single Phase
- 16.Number of cable entries: 2 (bottom)
- 17.Enclosure cover: Fixed
- 18.Country of origin: 

Circuit Diagram



**Mounting Template (mm):
(Not to Scale)**



D	E	F	G
231m m	243m m	185 mm	204m m

Selection & Ordering info.

Power (H.P)	0.5	1	1.5	2	3
Relay Range (Amps)	4-6.5	6-10	9-14	13-21	20-32
Cat Number (MaCHK-1)	PSCH	PSC1	PSC1H	PSC2	PSC3
Standard Pkg.	6/range				

Links

Product page - <https://kalpcontrols.com/product/dol-submersible-pump-panel-machk-1-single-phase-compact/>
 Video url - <https://www.youtube.com/playlist?list=PLOXFzEEAifkzhv3h6a8l0SWCvwYcWTzt>