



## Magnum Gold MaK-1 Pump Control Panel - Three Phase

### Introduction

Magnum Gold MaK-1 Pump Control Panel - T.P is the most simplest and reliable controller for Three Phase Pumps/Motors. It is housed in a powder coated MS enclosure with a robust MaK-1 Contactor and O.L Relay. It has a Toroidal Preventor which protects the motor from Single Phasing

### Salient Features

1. Powder coated MS enclosure for corrosion resistance & sturdiness.
2. Rugged MaK-1 Contactor with wide voltage band (250V to 440V).
3. Fitted with MaK-1 type relay for reliable overload protection.
4. Fitted with Toroidal type preventer (current sensing) to protect the motor against single phasing.
5. Ergonomic design with aesthetic looks.
6. Easy and quick mounting.
7. Fitted with ammeter to inspect the motor current and voltmeter to inspect the incoming power supply.
8. Indication lamps for voltage between the phases.
9. No screw protrusion from the panel, hence additional safety from water, dust, corrosion and electric shock.
10. Voltage selector switch - to read voltage between different phases
11. Gasketed enclosure for protection from ingress of dirt and water

### Functions


1. Switches your pump/ motor on and off.
2. Protects the pump from:
  - Over - Current
  - Single phasing condition
3. Indicates incoming voltage and current drawn by the motor.

### Applications

Magnum Three phase DOL Pump Controllers/Starters are reliable "Workhorses" for domestic, agricultural and industrial applications. Magnum Controllers/Starters are found in many applications such as drainage, sewage pumping, general industrial pumping and slurry pumping. Also used to control,

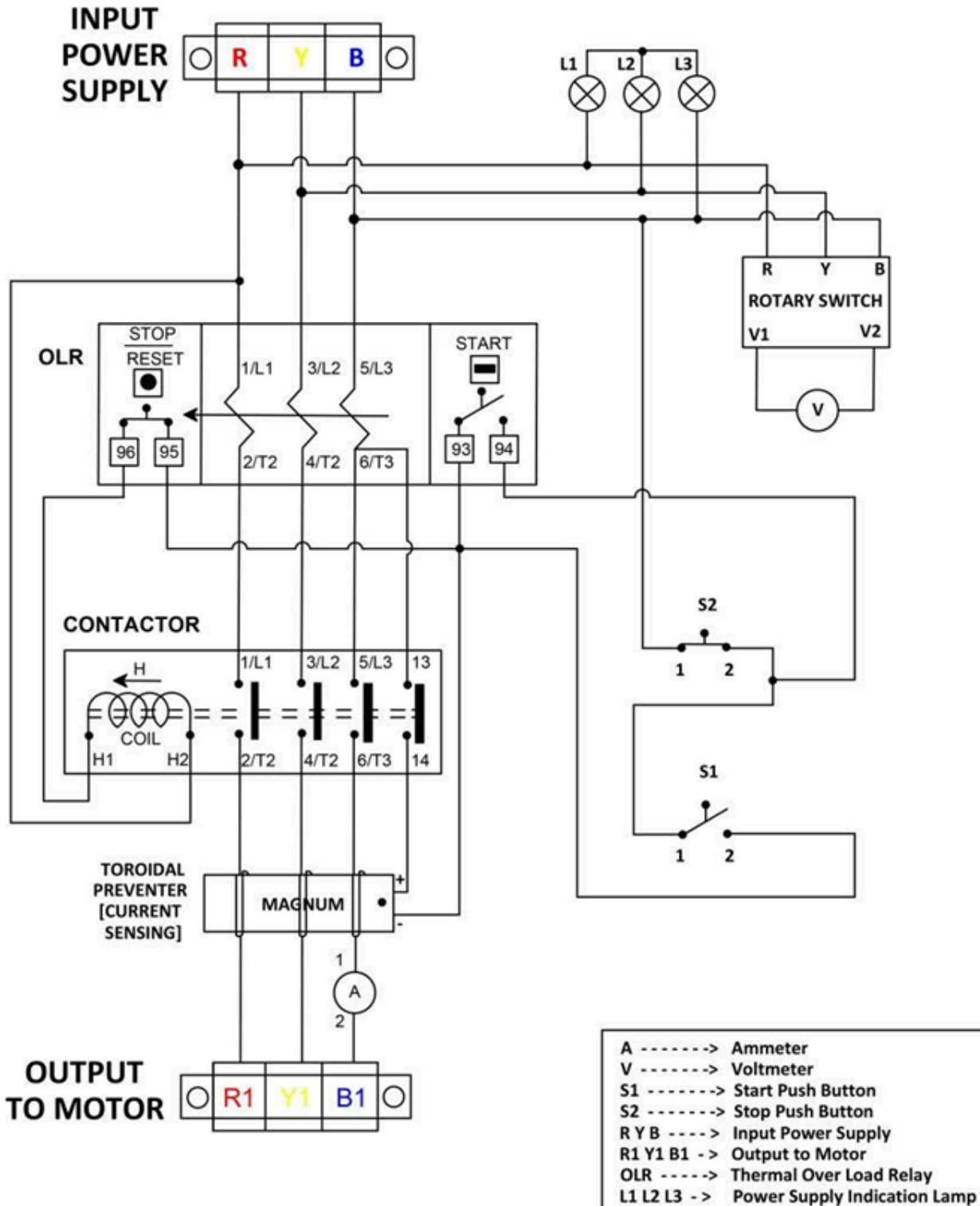
- \* Pumps/Motors
- \* Fans
- \* Compressors, lathes and other machinery
- \* Stirrers and mixers

### Technical Specifications

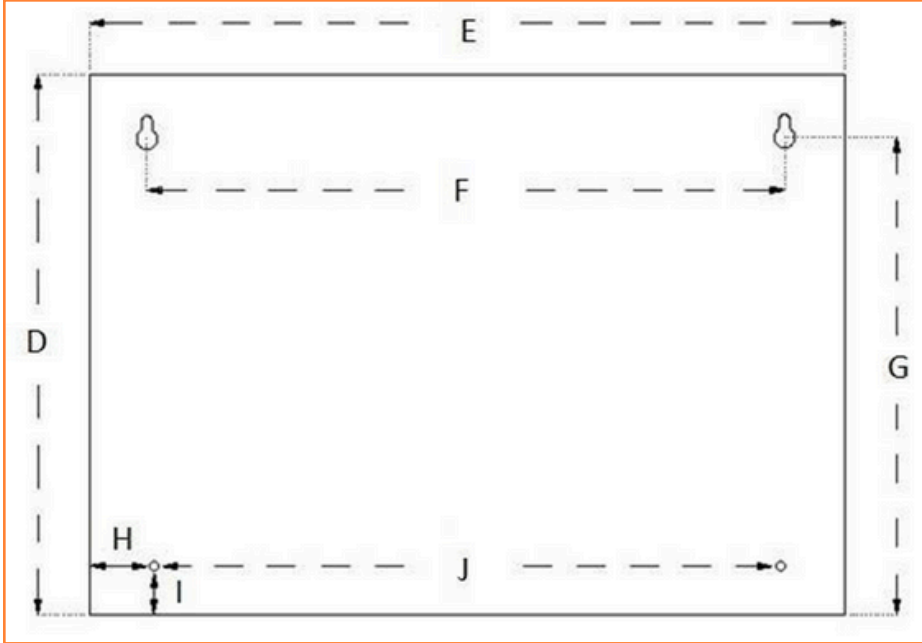
1. Enclosure: Powder Coated Mild Steel
2. Current: AC
3. Operating Voltage: 70% to 105% of coil voltage
4. Pick up voltage: Minimum 70% of coil voltage
5. Drop off voltage: Below 50% of coil voltage
6. Contactor: MaK-1 4 Pole /MaK-1 Heavy Duty (4P)
7. Relay: MaK-1 4 Pole
8. Area: 348 \* 230 \* 167 mm
9. Net Weight: 4.70 Kilograms
10. Insulation Voltage AC (Vi): 660V
11. Frequency & Ambient Temperature: 50Hz & (-25°C to +55°C)
12. Terminal Capacity: 1 \* 16 mm<sup>2</sup> or 2 \* 10 mm<sup>2</sup>
13. Power range: Up to 10 HP/32A (2/3/5/7.5/10 HP)
14. Coil Voltage: 440 V
15. Phase: 3 Phase
16. Number of cable entries: 2 (bottom)
17. Enclosure cover: Fixed
18. Country of origin: 

**Circuit Diagram**

**DIRECT ON LINE SUBMERSIBLE PUMP PANEL - GOLD [MaK-1]**



**Mounting Template (mm): (Not to Scale)**



D (mm)	E (mm)	F (mm)	G (mm)	H (mm)	I (mm)	J (mm)
230	348	290	205	30	20	275

**Selection & Ordering info.**

<b>Power (H.P)</b>	2	3	5	7.5	10
<b>Relay Range (Amps)</b>	4-6.5	6-10	9-14	13-21	20-32
<b>MaK-1</b>	PTGK2	PTGK3	PTGK5	PTGK7H	PTGK10
<b>Standard Pkg.</b>	4/range				

**Links**

Product page - <https://kalpcontrols.com/product/dol-submersible-pump-panel-mak-1-three-phase-gold/>  
 Video url - [https://www.youtube.com/playlist?list=PLOXFzEEAifmQcQsCCzmL\\_gfUnK4lFzes](https://www.youtube.com/playlist?list=PLOXFzEEAifmQcQsCCzmL_gfUnK4lFzes)