



## Magnum Pradhaan Pro MaCH Pump Control Panel - Single Phase

### Introduction

Magnum Pradhaan Pro MaCH Pump Control Panel - S.P. (Dry Run Protection) is a smart and powerful controlling device for your submersible pump made with heavy duty components, which protects the pump from hazards caused due to over-current, low and high voltage, short circuit and dry run. This panel comes with an advance meter Magnum Rakshak - which also has an off-timer (User can set time duration for pump to switch off)

### Applications

Magnum Single Phase Submersible Control Panels are powerful controlling devices for your submersible pumps which are used for domestic & agricultural installations. Magnum Panels controls submersible pumps found in many applications such as:

- Drainage
- Sewage Pumping
- General Industrial Pumping
- Slurry Pumping

### Functions

1. Switches your pump/motor on and off.
2. Protects the pump from over current, high and low voltage, short-circuit and dry run.
3. Provides extra torque when the pump is being started.
4. Maintains torque level while the pump is running.
5. Indication of incoming voltage and current drawn by the motor.

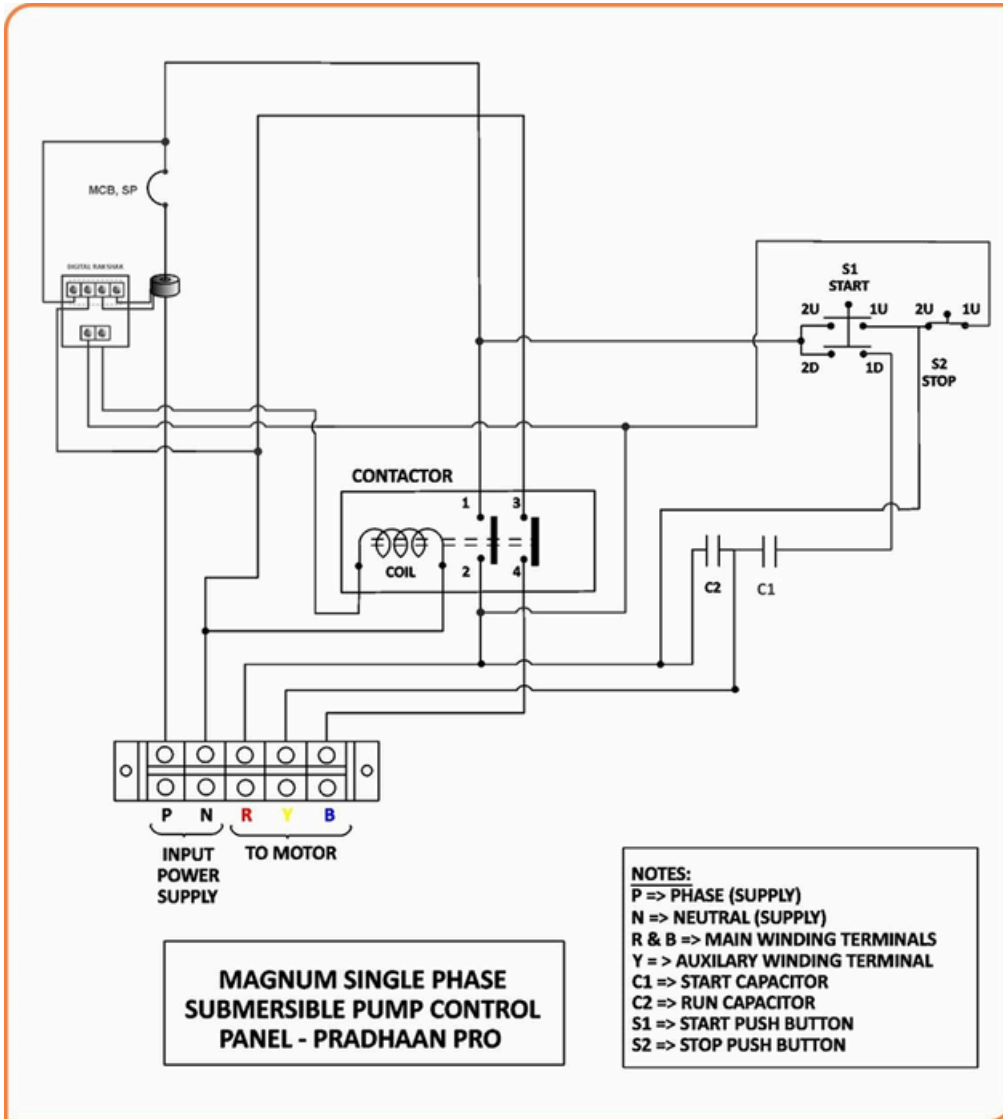
### Salient Features

1. Engineered Polycarbonate enclosure withstands high temperature and is free from Short- Circuit and Corrosion unlike the metal ones.
2. Rugged MaCH contactor with wide voltage band (140-240V).
3. Digital Metering for easy and accurate reading, dry run protection, high and low voltage protection, off-timer.
4. Reliable and Branded MCB for overload and short circuit protection.
5. Ergonomic design with aesthetic looks.
6. No screw protrusion from the panel, hence additional safety from water, dust, corrosion and electric shock.
7. Porcelain connectors for easy and safe termination

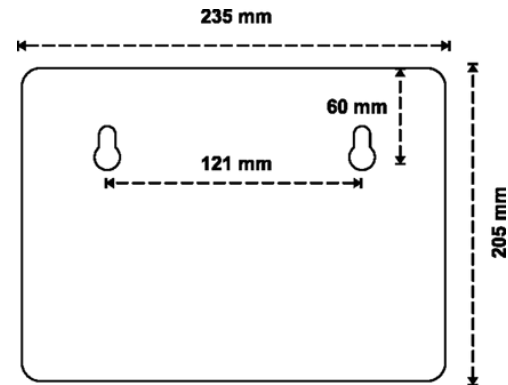
### Technical Specifications

1. Enclosure: Engineered Poly Carbonate
2. Current: AC
3. Operating Voltage: 70% to 105% of coil voltage
4. Pick up voltage: Minimum 70% of coil voltage
5. Drop off voltage: Below 50% of coil voltage
6. Contactor: MaCH 2 Pole
7. MCB: Single Pole (6A to 20A)
8. Area: (252x215x105) mm
9. Net Weight: 1.90 Kilograms
10. Insulation Voltage AC (Vi): 660V
11. Frequency: 50Hz
12. Ambient Temperature: -25°C to +55°C
13. Power range: Up to 2 HP
14. Coil Voltage: 220 V
15. Phase: 1 Phase
16. Number of cable entries: 2 (bottom)
17. Enclosure cover: Fixed
18. Terminal Capacity: 1 \* 16 mm<sup>2</sup> or 2 \* 10 mm<sup>2</sup>
19. Country of origin: **MADE IN INDIA**

**Circuit Diagram**



**Mounting Template (mm):  
(Not to Scale)**



**Selection & Ordering info.**

Power in H.P.	0.5	1	1.5	2
MCB(Amps)	6	10	16	20
Cat Number (Pradhaan Pro)	PSPPH	PSPP1	PSPP1H	PSPP2
Standard Pkg.	8 units			

**Links**

Product page - <https://kalpcontrols.com/product/pradhaan-pro-pump-panel/>  
 Video url - [https://www.youtube.com/playlist?list=PLOXFzEEAifnm\\_sJuuqYx1rlzzRU-uqS2](https://www.youtube.com/playlist?list=PLOXFzEEAifnm_sJuuqYx1rlzzRU-uqS2)