



## Magnum Pradhaan MaCH Pump Control Panel - Single Phase

### Introduction

Magnum Pradhaan MaCH Pump Control Panel S.P is a powerful controlling device for your submersible pump made with heavy duty components, which protects the pump from hazards caused due to over-current.

### Applications

Magnum Single Phase Submersible Control Panels are powerful controlling devices for your submersible pumps which are used for domestic & agricultural installations. Magnum Panels controls submersible pumps found in many applications such as:

- Drainage
- Sewage Pumping
- General Industrial Pumping
- Slurry Pumping

### Functions

- 1.Switches your pump/motor on and off.
- 2.Protects the pump from over current, high voltage and short-circuit.
- 3.Provides extra torque when the pump is being started.
- 4.Maintains torque level while the pump is running.
- 5.Indication of incoming voltage and current drawn by the motor.

### Salient Features

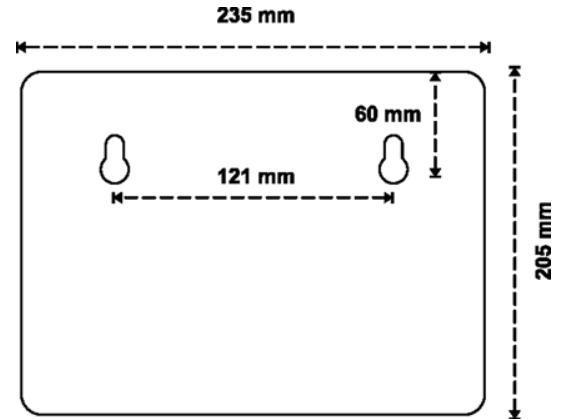
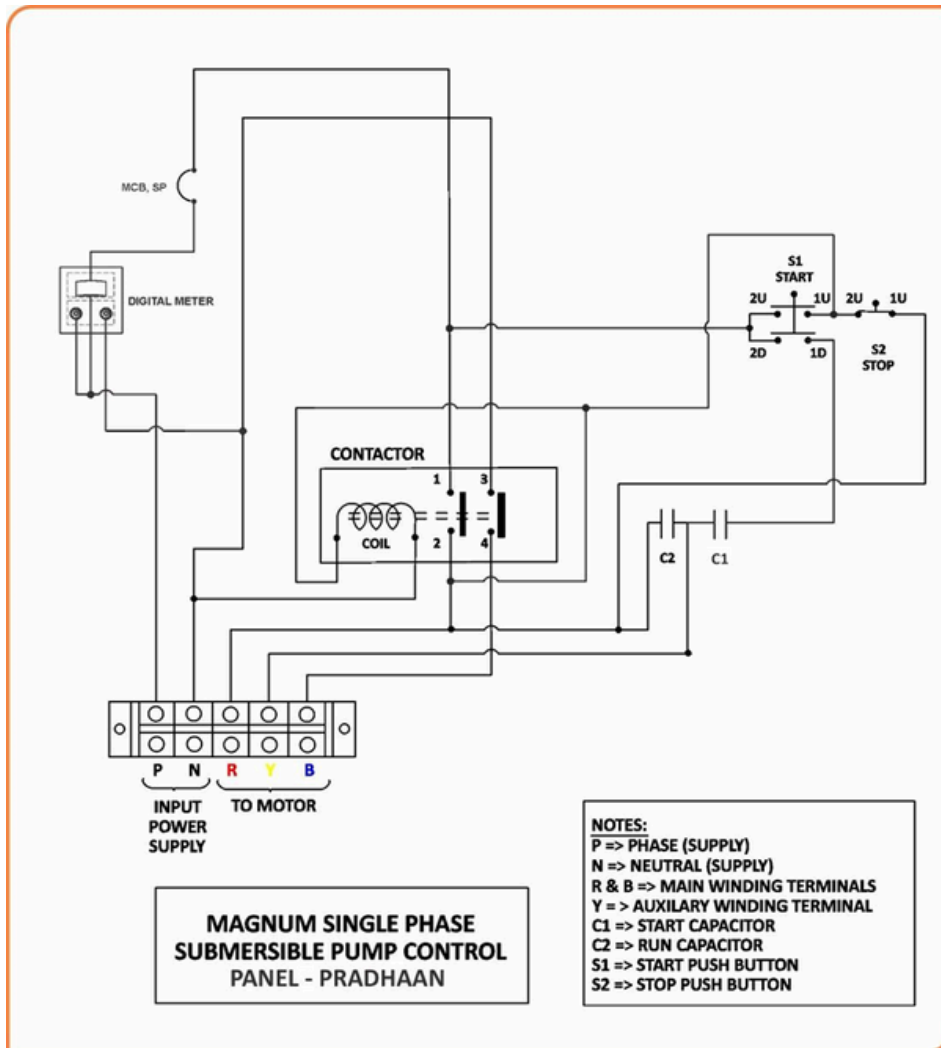
- 1.Engineered Polycarbonate enclosure withstands high temperature and is free from Short- Circuit and Corrosion unlike the metal ones.
- 2.Rugged MaCH contactor with wide voltage band (140-240V).
- 3.Digital Metering for easy and accurate reading.
- 4.Reliable and Branded MCB for overload and short circuit protection.
- 5.Ergonomic design with aesthetic looks.
- 6.No screw protrusion from the panel, hence additional safety from water, dust, corrosion, and electric shock.
- 7.Porcelain connectors for safe and easy termination.

### Technical Specifications

- 1.Enclosure: Engineered poly carbonate
- 2.Current: AC
- 3.Operating Voltage: 70% to 105% of coil voltage
- 4.Pick up voltage: Minimum 70% of coil voltage
- 5.Drop off voltage: Below 50% of coil voltage
- 6.Contactor: MaCH 2 Pole
- 7.MCB: Single Pole (6A to 20A)
8. Area: (252x215x105) mm
9. Net Weight: 1.84 Kilograms
- 10.Insulation Voltage AC (Vi): 660V
- 11.Frequency & Ambient Temperature: 50Hz & (-25°C to +55°C)
- 12.Terminal Capacity: 1 \* 16 mm<sup>2</sup> or 2 \* 10 mm<sup>2</sup>
- 13.Power range: 0.5/1/1.5/2 HP
- 14.Coil Voltage: 220 V
- 15.Phase: Single Phase
- 16.Number of cable entries: 2 (bottom)
- 17.Enclosure cover: Fixed
- 18.Country of origin: **MADE IN INDIA**

**Circuit Diagram**

**Mounting Template (mm):  
(Not to Scale)**



**Selection & Ordering info.**

Power in H.P.	0.5	1	1.5	2
MCB(Amps)	6	10	16	20
Cat Number (Pradhaan )	PSPH	PSP1	PSP1H	PSP2
Standard Pkg.	8/range			

**Links**

Product page - <https://kalpcontrols.com/product/pradhaan-submersible-pump-control-panel/>  
Video url - [https://www.youtube.com/playlist?list=PLOXFfzEEAiflnJGK\\_ueHX4MOf4k5aOiN](https://www.youtube.com/playlist?list=PLOXFfzEEAiflnJGK_ueHX4MOf4k5aOiN)