



# Magnum Trishakti Star Delta Starters MaU

## Introduction

Magnum Trishakti Star Delta Starters MaU are powerful controlling devices for higher H.P Motors. These are made from quality raw materials, enabling them to protect and control your motor consistently.


## Applications

Magnum Trishakti Semi-Automatic Star Delta Starters MaU are powerful controlling devices for higher H.P Motors. They are used in Area of Application, Industries - heavy machinery Floor Mills, Compressors, Lathes etc. Water Irrigation Pumps

## Functions

- 1.Switches your pump/motor on and off.
- 2.Being based on Star-Delta mechanism the starting torque & current is considerably reduced on the motor.
- 3.Protects the pump/motor from over-current.
- 4.Trips when there is persistent overload on the motor.
- 5.Ensures reliable performance in high ambient temperatures, humidity & under-voltage conditions

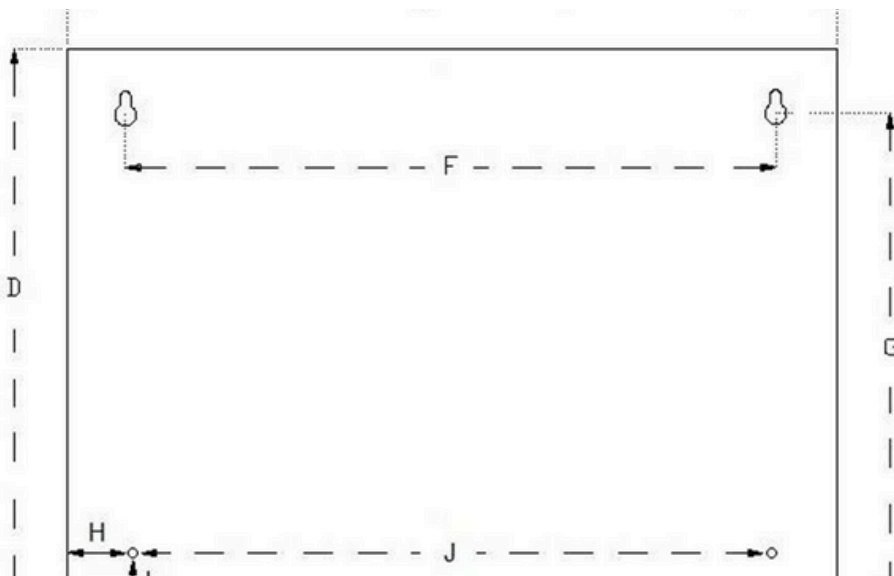
## Technical Specifications

- 1.Enclosure: Powder Coated Mild Steel
- 2.Current: AC
- 3.Operating Voltage: 70% to 105% of coil voltage
- 4.Pick up voltage: Minimum 70% of coil voltage
- 5.Drop off voltage: Below 50% of coil voltage
- 6.Contactor: MaU 4 Pole [16A / 25A / 32A / 40A]
- 7.Relay: MaU 4 Pole
- 8.Area: MaU (370 \* 330 \* 143) mm
- 9.Net Weight: 8.6 – 8.7 Kilograms
- 10.Insulation Voltage AC (Vi): 660V
- 11.Frequency & Ambient Temperature: 50Hz & (-25°C to +55°C)
- 12.Terminal Capacity: 1 \* 16 mm<sup>2</sup> or 2 \* 10 mm<sup>2</sup>
- 13.Power range: Up to 20 HP/40A
- 14.Coil Voltage: 440 V
- 15.Phase: 3 Phase
- 16.Number of cable entries: 1+2 (top+ bottom)
- 17.Enclosure cover: Fixed
- 18.Country of origin: 

## Salient Features

1. Powder coated MS enclosure for corrosion resistance.
2. Rugged and heavy duty MaU contactors for extra load with wide voltage band (200- 440V).
3. Fitted with MaU type relay for reliable overload protection.
4. Manual reset facility after overload protection.
5. A latch on the push button can be used to keep the stop button locked, thus preventing accidental starting.
6. Input & Output connections are terminated through a terminal block [Hence no intervention is required on the circuit]
7. All connections are terminated through appropriate crimping Luggs.
8. Easy & quick mounting.
9. Ergonomic design with aesthetic looks.
10. There is a provision for using an auxiliary contact block with configuration 1NO + 1NC.
11. No screw protrusion from the panel, hence additional safety from water, dust, corrosion and electric shock.
12. Gasketed enclosure for protection from ingress of dirt and water

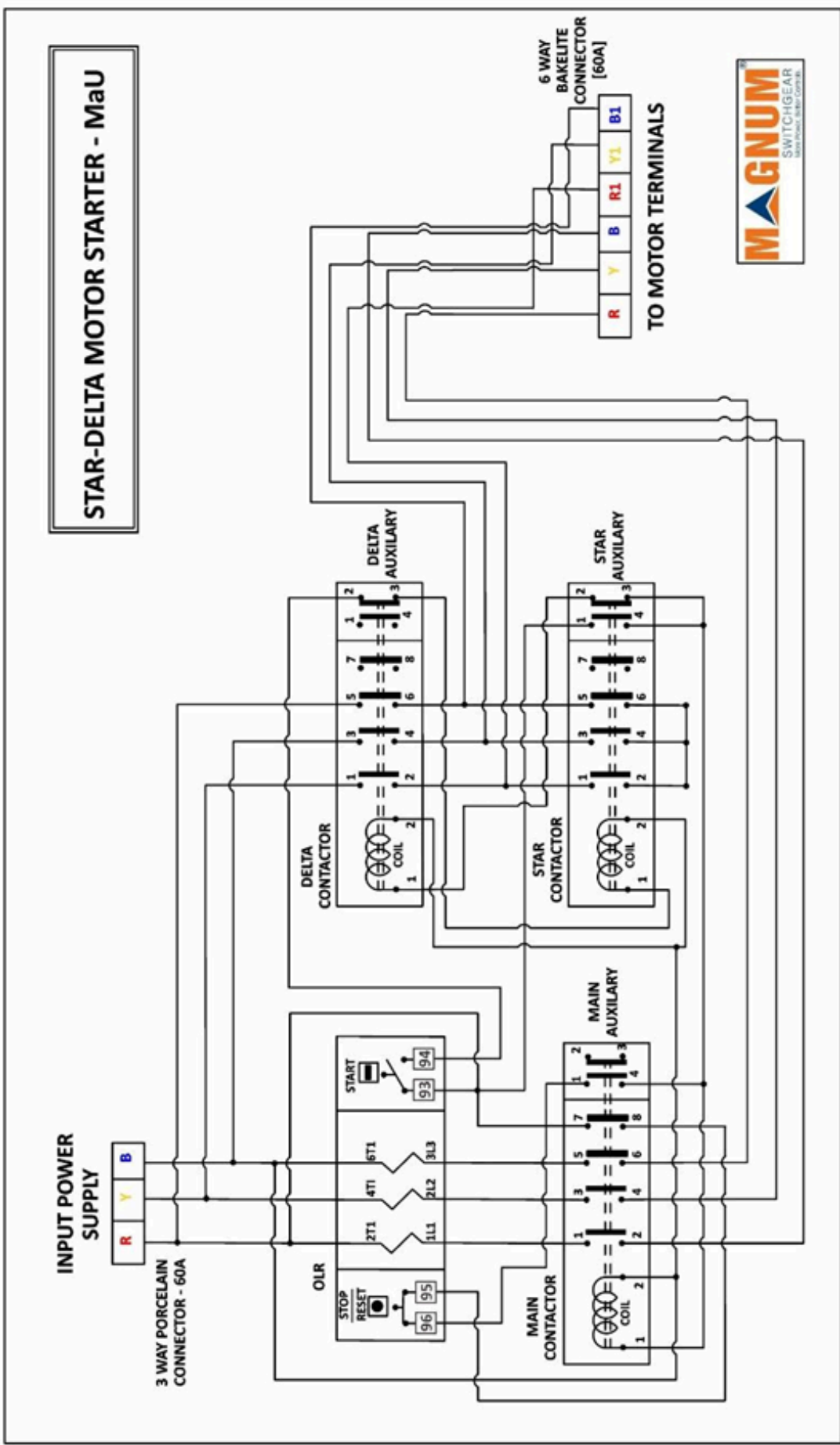
## Mounting Template (mm): (Not to Scale)



D (mm)	E (mm)	F (mm)	G (mm)	H (mm)	I (mm)	J (mm)
370	330	277	344	43	26	234

**Circuit Diagram**

**STAR-DELTA MOTOR STARTER - MaU**



## Selection & Ordering info.

<b>Relay Range (Amps)</b>	06-10	09-14	11-18	13-21	20-32	20-32	28-42
<b>Power in H.P.</b>	7.5	10	12.5	15	17.5	20	20
<b>MaU SASD</b>	SDU7H	SDU10	SDU12H	SDU15	SDU17H	SDU20	SDU2042
<b>MaU FASD</b>	SDFU7H	SDFU10	SDFU12H	SDFU15	SDFU17H	SDFU20	SDFU2042
<b>Std. Pkg.</b>	2/ range						

## Links

Product page - <https://kalpcontrols.com/product/trishakti-star-delta-motor-starter-mau/>  
 Video url - [https://www.youtube.com/playlist?list=PLOXFzEEAiflqZQQTgRTr\\_RV5YNHyHb\\_O](https://www.youtube.com/playlist?list=PLOXFzEEAiflqZQQTgRTr_RV5YNHyHb_O)