

# MAGNUM<sup>®</sup>

More Power, Better Controls

## USER MANUAL

### THREE PHASE METERING PANEL - SANKET

To find more about us and our products, scan below QR codes



*Facebook*



*Videos*



*Website*

## KALP CONTROLS

Unit 1 : #40, 2<sup>nd</sup> Main Road, Pete Chennappa Industrial Estate,  
Kamakshipalya, Magadi Road, Bangalore-560079. (India)

Website: [www.magnumswitchgear.com](http://www.magnumswitchgear.com)

For queries and suggestions mail us to [info@magnumswitchgear.com](mailto:info@magnumswitchgear.com)

**Customer Care No: +91-8884759222**

## INDEX

Sl. No.	Topic	PG.NO.
1	Introduction	3
2	About Magnum Metering Panel - SANKET	4
3	Installation and Instructions	5
4	Mounting Template	6
5	Technical Specifications and Configuration	6
6	Circuit Diagram	8
7	Precautions and Maintenance	9
9	Spares and Assemblies Available	9
10	Warranty Card and Policy	10

## INTRODUCTION

**Dear Customer,**

Congratulations on purchase of MAGNUM METERING PANEL - SANKET. Magnum Metering panels are reliable measurement devices for domestic, industrial and agricultural installations.

Located in Bangalore, Kalp Controls commenced its operations in the year 2009. At Kalp Controls, we are focused on offering you heavy duty,

1. Submersible Pump Panel - DOL & Star Delta
2. Open Well Pump Panel
3. Starters - DOL & Start Delta
4. Single Phasing Preventer & Auto Start Unit.
5. Spares like Contactor, Relay, Capacitor, Meters etc.

## ABOUT MAGNUM METERING PANEL - SANKET

Magnum Three Phase Metering Panel is a precision metering device for three phase applications like DOL Motors made with high quality raw materials.

### Functions

1. Indication of current drawn by the motor.
2. Indication of voltage supplied to the panel.
3. Individual Indication lamps for phase voltage supply indications.

### Salient Features

1. Powder coated MS enclosure for complete corrosion resistance & sturdiness.
2. Heavy Duty Components and Wiring.
3. Mounting clamp for easy fitting.
4. Ergonomic design with aesthetic looks.

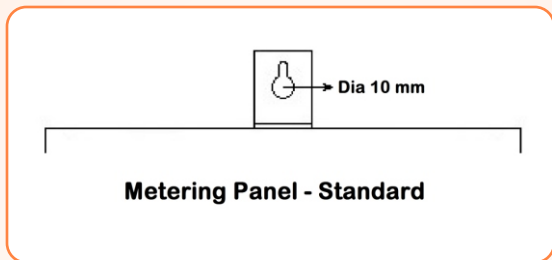
## INSTALLATION INSTRUCTIONS

1. Drill holes with the help of the given template.
2. Mount the panel tight and straight.



- Connect the supply cables to the cables where terminals are marked as R, Y and B.  
Note: Input Supply: R, Y, B
- Connect the Motor cables to the cables where terminals are marked as R1, Y1 and B1.  
Note: Output Supply: R1, Y1, B1

## MOUNTING TEMPLATE (Not to scale)



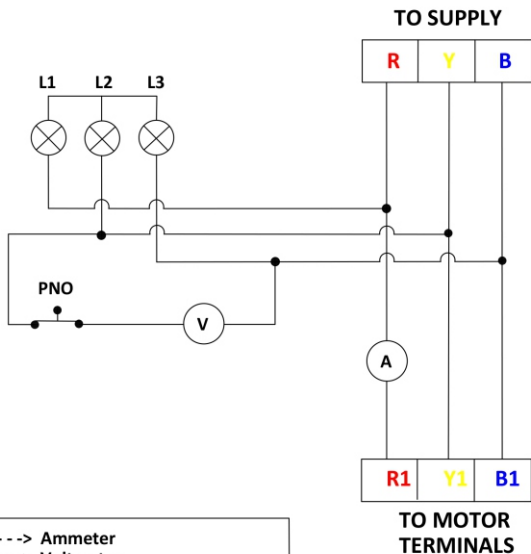
## TECHNICAL SPECIFICATIONS

1. Rated Operating Voltage: 380-440V
2. Area : for Standard =  $(200 \times 118 \times 75)$  mm  
 . for Deluxe =  $(100 \times 290 \times 65)$  mm
3. Net Weight : for Standard = 1.0 – 1.2 Kilo grams  
 . for Deluxe = 1.4 – 1.6 Kilo grams
4. Frequency : 50Hz
5. Insulation Voltage Ac (Vi) : 660V
6. Ambient Temperature :  $-25^{\circ}\text{C}$  to  $+55^{\circ}\text{C}$
7. Terminal Capacity :  $1 \times 16 \text{ (mm)}^2$  or  $2 \times 10 \text{ (mm)}^2$

## Normal Configuration of the Panel

Sl. No.	Type	Catalogue No.	Voltmeter (V)	Ammeter (A)
1	Standard	MPS30	500	30
2		MPS60	500	60

## CIRCUIT DIAGRAM



A -----> Ammeter  
 V -----> Voltmeter  
 R Y B -----> Input Power Supply  
 R1 Y1 B1 -> Output to Motor  
 L1 L2 L3 -> Power Supply Indication Lamp

**METERING PANEL**



## PRECAUTIONS & MAINTENANCE

1. It is very important to keep the Panel away from water or moisture. In very humid places it is strongly recommended to keep it in a closed setting.
2. The best way for prolonged life of the Panel is to periodic inspection of keeping them free of dust and water.

## SPARES AND ASSEMBLIES AVAILABLE FOR THIS PANEL

PART DESCRIPTION	SPECIFICATION	PART NO
Magnum SR-72 Ammeter Magnum SR-72 Voltmeter	0-30 A 0-500 V	AM723 AM725
Indicator	220V Red 220V Blue 220V Yellow	ISL16R ISL16Y ISL16B
Button PNO	Green	BPN

## Warranty Policy

1. This product carries a warranty, against manufacturing defects only for a period of **12 months** from the **date of** manufacturing.
2. The warranty is however subject to provision of proper usage, efficient maintenance and **does not cover** defects arising out of **fire accident, Voltage Surge, Inefficient maintenance, faulty operation and willful or accidental damage**. Warrant is not covered for charred or burnt components at all.
3. The company will not be liable for any consequential loss, injury or damages attributable to defect or failure of its products.
4. We believe in our products and hence provide you with product guarantee, should it prove to be defective due to faulty workmanship or otherwise, we will remedy the defect or replace the faulty parts or the whole product at our discretion, as soon as possible, free of cost.
5. This product is made from quality raw materials and skilled assemblers. We believe in our product and hence provide you with this warranty of 12 months.
6. Proof of purchase (Invoice) is to be produced to avail the warranty.